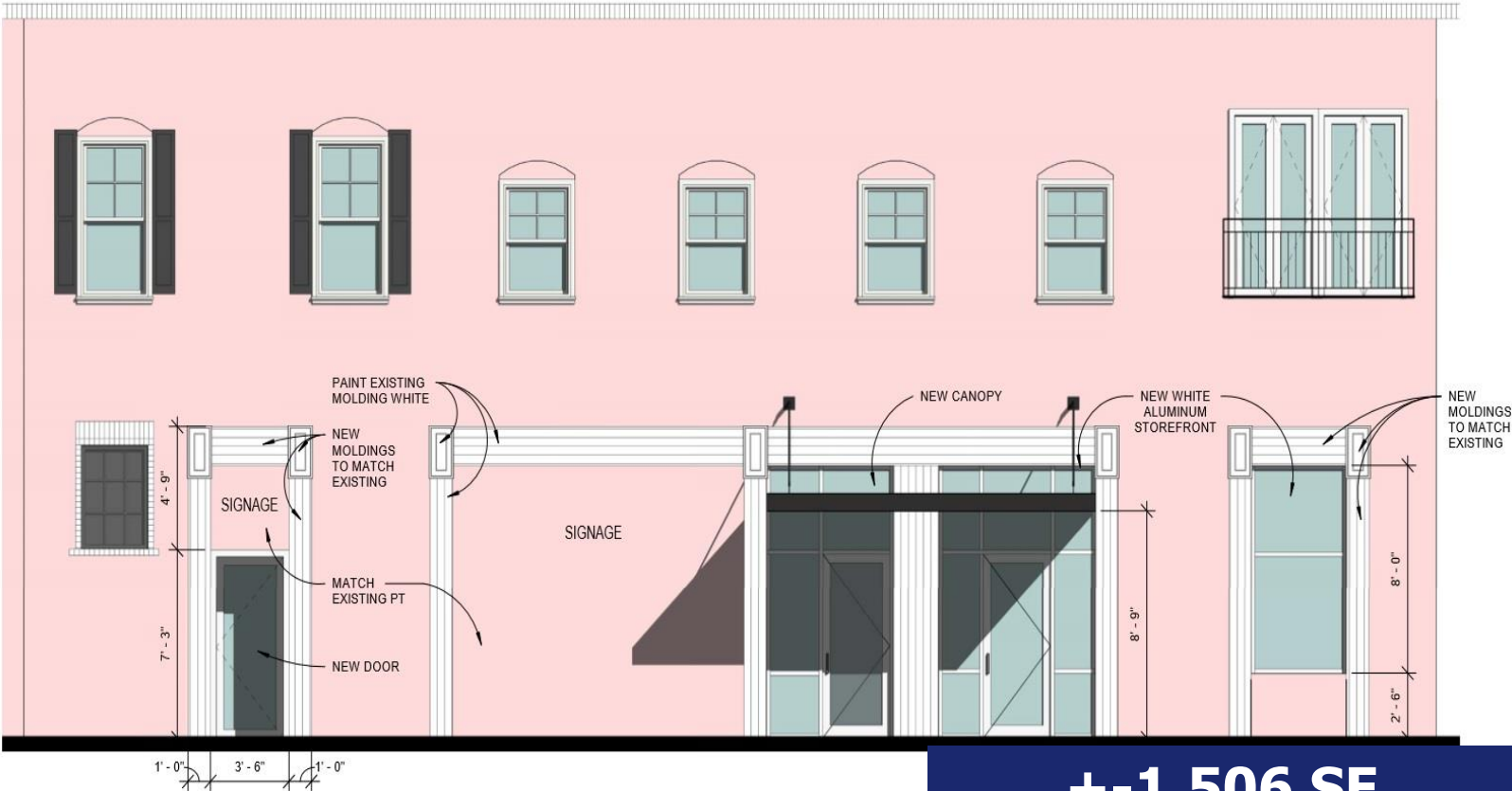




**SPENCER/HINES**  
P R O P E R T I E S

# RETAIL SPACE FOR LEASE

7 W North St., Greenville, SC, 29601



**+/-1,506 SF**  
**+/-2,638 SF**

**\$26.00/SF NNN Street**  
**\$12.00/SF NNN Basement**

## Great Retail Location

- Opportunity to join the downtown corridor with unprecedented vehicle traffic and signage.
- Located behind national retailer Blue Mercury
- Neighboring retailers include: Anthropologie, Brooks Brothers, Southern Tide, Lou Lou Boutique

## CONTACT

Zach Hines- 864.918.9944 mobile

[zhines@spencerhines.com](mailto:zhines@spencerhines.com)

Taylor Fisher- 864.608.5984 mobile

[taylor@spencerhines.com](mailto:taylor@spencerhines.com)

**WWW.SPENCERHINES.COM**

COMMERCIAL REAL ESTATE SALES, LEASING, & INVESTMENTS

245 N. Main Street STE 201, Greenville, SC 29601 - 864.991.8077

No warranty or representation, expressed or implied, is made to the accuracy of the information contained herein, and the same is submitted subject to errors, omissions, change of price, rental or other conditions, imposed by the principles.

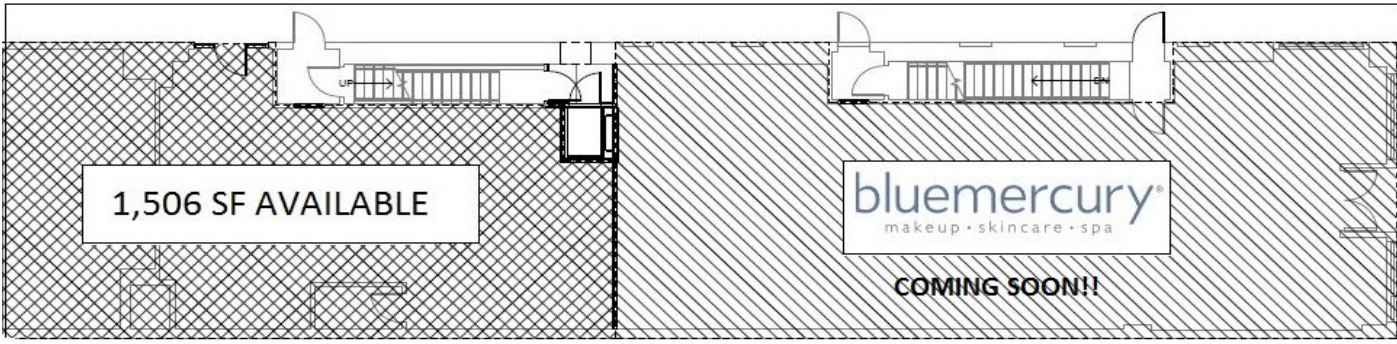




WEST NORTH STREET



MAIN STREET

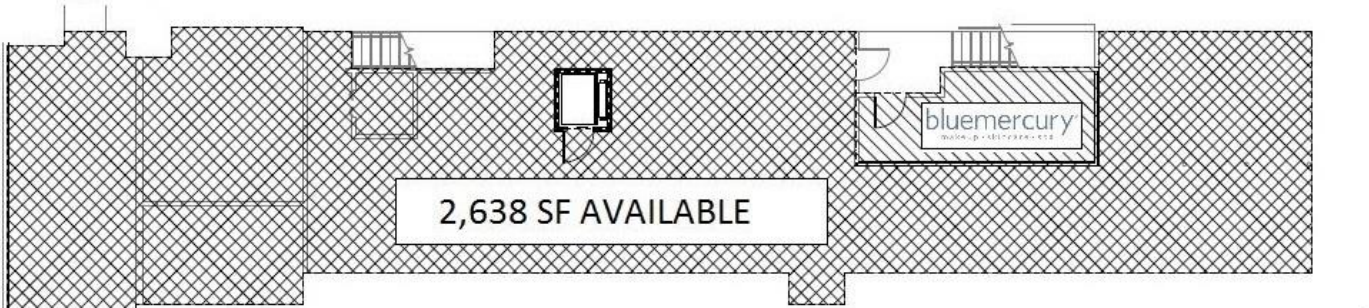


1 STREET LEVEL FLOOR PLAN  
1/8" = 1'-0"

WEST NORTH STREET



MAIN STREET



<b>EQUIP STUDIO</b>	<b>SK-001</b>	SQ. FT. (With Elevator)	1,506 SQUARE FEET OF STREET LEVEL SPACE AVAILABLE ADJACENT TO BLUEMERCURY 2,638 SQUARE FEET OF LOWER LEVEL SPACE AVAILABLE BELOW BLUEMERCURY
---------------------	---------------	-------------------------	---

2 LOWER LEVEL FLOOR PLAN  
1/8" = 1'-0"

[www.spencerhines.com](http://www.spencerhines.com)

COMMERCIAL REAL ESTATE SALES, LEASING, & INVESTMENTS  
245 N. Main Street STE 201, Greenville, SC 29601 - 864.991.8077

**CONTACT**

Zach Hines- 864.918.9944 mobile  
[zhines@spencerhines.com](mailto:zhines@spencerhines.com)

Taylor Fisher- 864.608.5984 mobile  
[taylor@spencerhines.com](mailto:taylor@spencerhines.com)





**SPENCER/HINES**  
PROPERTIES

# RETAIL SPACE FOR LEASE

7 W North St., Greenville, SC, 29601



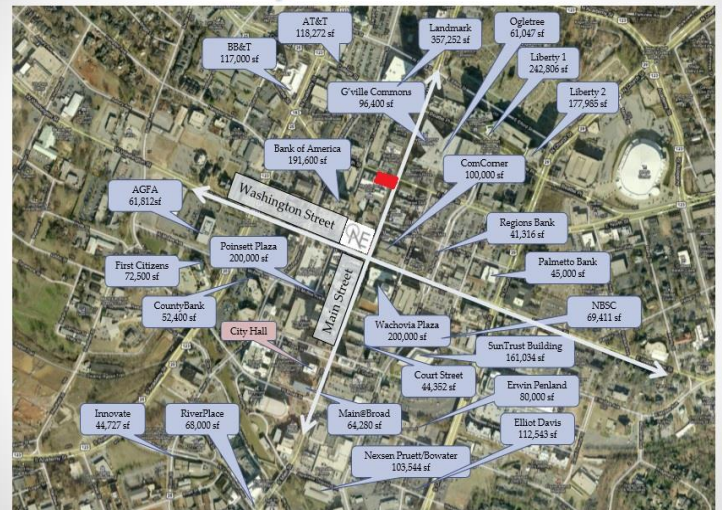
## Steps off of Greenville's award winning Main Street

### Parking Access



- Greenville offers free street parking downtown, as well as nearby garage parking and surface lots

### Proximity: Office Clientele



Surrounded by 1/3 of the Office Space in the Greenville/Spartanburg Area

[www.spencerhines.com](http://www.spencerhines.com)

COMMERCIAL REAL ESTATE SALES, LEASING, & INVESTMENTS

245 N. Main Street STE 201, Greenville, SC 29601 - 864.991.8077

### CONTACT

Zach Hines- 864.918.9944 mobile

[zhines@spencerhines.com](mailto:zhines@spencerhines.com)

Taylor Fisher- 864.608.5984 mobile

[taylor@spencerhines.com](mailto:taylor@spencerhines.com)